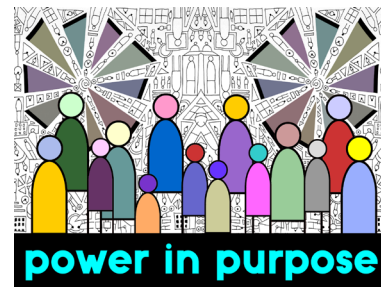
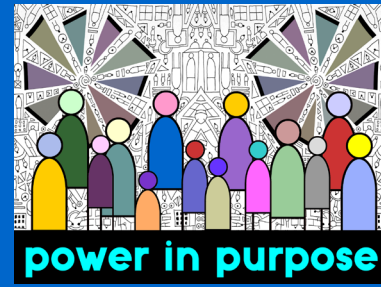


2022 Sector Snapshot



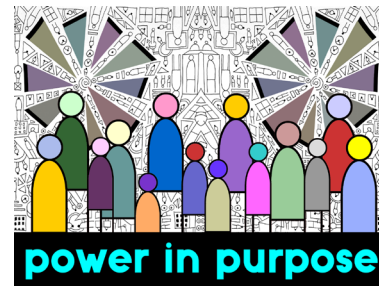
- Managing Money & People
- Responding to Community Needs
- Changing Strategies & Business Models

Optimism



- Operating Reserves
- 40% Predict budget Increase in 2023
- Building Partnerships with Government and other Organizations

84% Predict Growing Need



54%

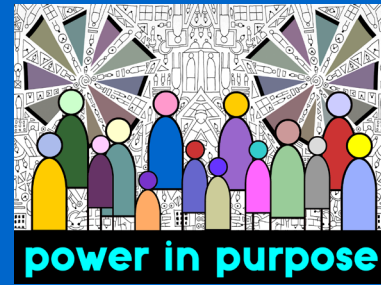
Moderate Increase

30%

Severe Increase

- Alternative Strategies:
 - Collaboration
 - Social Enterprise
 - Hybrid

Top 3 Challenges



- ✓ Staffing
- ✓ Funding to Cover Costs
- ✓ “post” Pandemic Adaptation